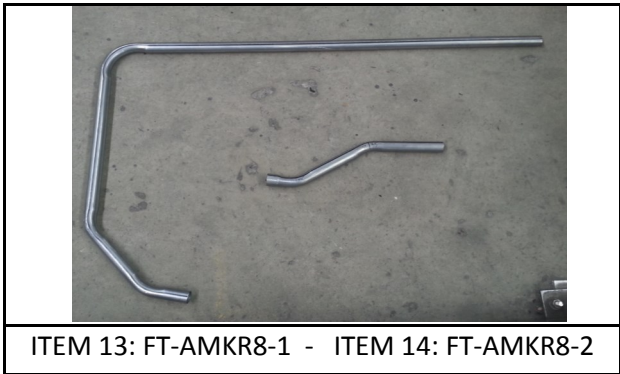


Brown Davis Automotive Pty. Ltd.  
ABN: 72 657 573 544  
Copyright Brown Davis Automotive Pty. Ltd. This document contains technical information the property of Brown Davis Automotive Pty. Ltd.

**AUTOMOBILITY KIA WHEEL CHAIR ACCESS VEHICLE—RIGHT HAND SIDE FITMENT  
58lt REPLACEMENT TANK  
REPLACEMENT FUEL TANK PARTS LIST AND FITTING INSTRUCTIONS  
PART NUMBER: AMKR8**

Item #	Description	Quantity	Part No.	P	C
1	TANK—REPLACEMENT	1	AMKR8	-	-
2	DRAIN PLUG—MAGNETIC—M14 (FITTED TO THE TANK)	1		-	-
3	HOSE – FUEL INJECTION - 8mm	400mm			
4	HOSE – TMP - 16mm	600mm			
5	HOSE – FILLER – 38mm	100m (x4)			
6	HOSE CLAMP – STAINLESS – 8-16mm	2			
7	HOSE CLAMP – STAINLESS – 16-27mm	4			
8	HOSE CLAMP – STAINLESS – 32-50mm	8			
9	HOSE CLAMP – NORMA – 12mm	4			
10	BRASS FITTING - ELBOW - 5/8" x ¼ BSP	1			
11	DISCRIMINATOR VALVE	1			
12	DISCRIMINATOR VALVE SEAL	1			
13	SET SCREW – HEX – M10 x 30mm – PLATED 8.8	3			
14	WASHER – PANEL PLATED – M10	3			
15	WASHER – SHAKE PROOF – M10	3			
16	SET SCREW – HEX - METRIC FINE– M10 x 30mm – PLATED 8.8	1			
17	FILLER TUBE - 1 - 38mm	1	FT-AMKR8-1		
18	FILLET TUBE - 2 - 38mm	1	FT-AMKR8-2		
19	FAST FILL TUBE - 1 - 16mm	1	FT-AMKR8-3		
20	FAST FILL TUBE - 2 - 16mm	1	FT-AMKR8-4		
21	WARRANTY CARD & INFORMATION	1			
22	BROWN DAVIS AUTOMOTIVE STICKER	1			

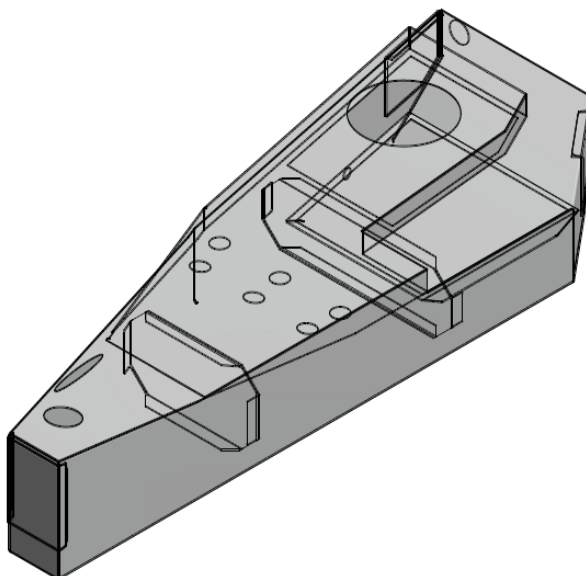


	STAFF MEMBERS INITIALS	DATE
KIT PACKED BY		
KIT CHECKED BY		

Brown Davis Automotive Pty. Ltd.  
ABN: 72 657 573 544

Copyright Brown Davis Automotive Pty. Ltd. This document contains technical information the property of Brown Davis Automotive Pty. Ltd.

### PART NUMBER: AMKR8 REPLACEMENT FUEL TANK PARTS LIST AND FITTING INSTRUCTIONS



#### WARNING:

**THIS FUEL TANK IS HEAVY. DO NOT ATTEMPT TO LIFT THIS FUEL TANK WITHOUT APPROPRIATE ASSISTANCE OR SERIOUS INJURY MAY RESULT**



#### WARNING:

**ENSURE A FIRE EXTINGUISHER IS AVAILABLE WHILST WORKING NEAR EXPOSED FUEL**



**-CHECK CONTENTS OF KIT BEFORE COMMENCING FITMENT**

**-DRAIN VEHICLE FUEL TANK TO LOWEST LEVEL POSSIBLE BEFORE COMMENCING FITMENT**

**-BEFORE INSTALLATION THE BROWN DAVIS LONG RANGE TANK SHOULD BE WASHED OUT WITH THE SAME FUEL TYPE AS THE VEHICLE IT'S BEING FITTED TO**

**Any questions or information required in relation to the below instructions please do not hesitate to contact Brown Davis head office or one of our distributors.**

**Phone: +61 (3) 9762 8722  
Email: [info@browndavis.com.au](mailto:info@browndavis.com.au)**