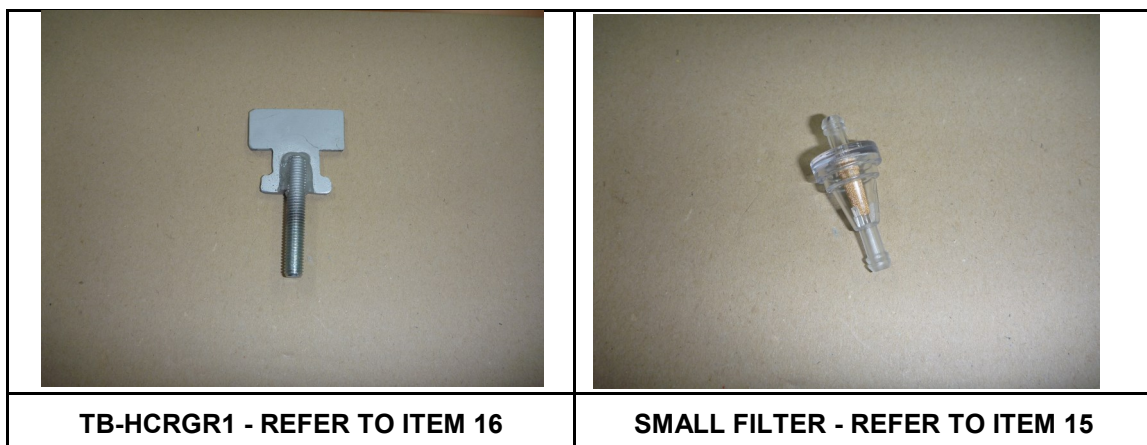


HOLDEN COLORADO RG (2012-PRESENT) – 128lt REPLACEMENT TANK LONG RANGE FUEL TANK PARTS LIST AND FITTING INSTRUCTIONS PART NUMBER: HCRGR1

Item #	Description	Quantity	Part No.	P	C
1	TANK – REPLACEMENT	1	HCRGR1	-	-
2	DRAIN PLUG – MAGNETIC – M14 (fitted to tank)	1	DP-M14	-	-
3	HOSE – FUEL AND EMISSION - 6mm	0.6m			
4	HOSE CLAMP – NORMA - 12mm	1			
5	BRASS – ELBOW - 5/8" x 3/8" BSP	1			
6	CUSHION CLAMP - 10mm	2			
7	CUSHION CLAMP - 13mm	2			
8	NUT – STANDARD PLATED – M10	4			
9	WASHER – PANEL PLATED – M10	2			
10	WASHER – SPRING PLATED – M10	2			
11	NUT – NYLOC PLATED – M6	2			
12	WASHER – PANEL PLATED – M6	2			
13	DISCRIMINATOR VALVE	1			
14	DISCRIMINATOR VALVE SEAL	1			
15	SMALL FILTER	1			
16	MOUNTING BRACKETS WITH M10 THREAD	2			
17	OPPERATIONS AND WARRANTY BOOKLET	1	TB-HCRGR1		
18	BROWN DAVIS AUTOMOTIVE STICKER	1			

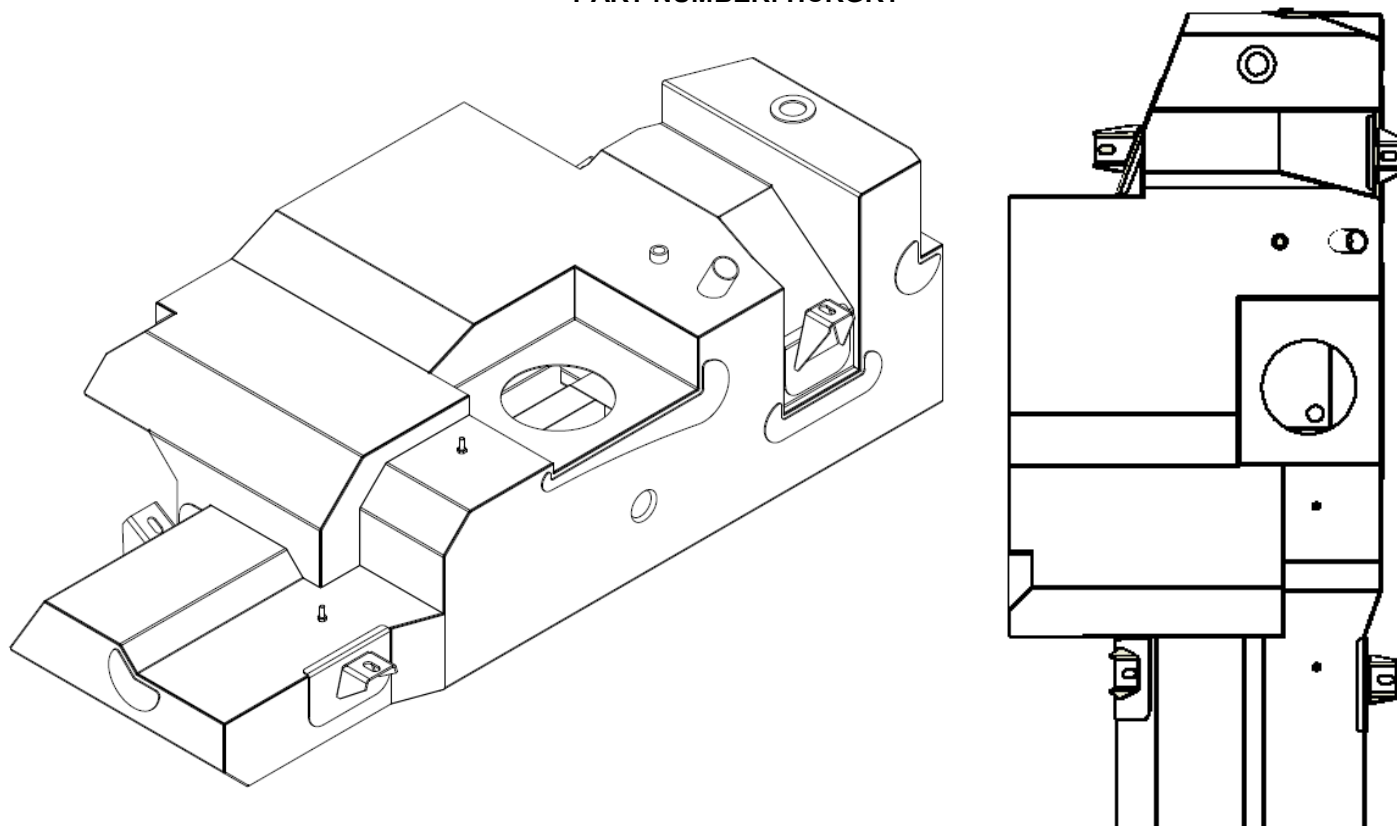


	STAFF MEMBERS INITIALS	DATE
KIT PACKED BY		
KIT CHECKED BY		

Brown Davis Automotive Pty. Ltd.
ABN: 72 657 573 544

Copyright Brown Davis Automotive Pty. Ltd. This document contains technical information the property of Brown Davis Automotive Pty. Ltd.

HCRGR1 – 128lt REPLACEMENT TANK LONG RANGE FUEL TANK PARTS LIST AND FITTING INSTRUCTIONS PART NUMBER: HCRGR1



WARNING:

THIS FUEL TANK IS HEAVY. DO NOT ATTEMPT TO LIFT THIS FUEL TANK WITHOUT APPROPRIATE ASSISTANCE OR SERIOUS INJURY MAY RESULT



WARNING:

ENSURE A FIRE EXTINGUISHER IS AVAILABLE WHILST WORKING NEAR EXPOSED FUEL



-CHECK CONTENTS OF KIT BEFORE COMMENCING FITMENT

-DRAIN VEHICLE FUEL TANK TO LOWEST LEVEL POSSIBLE BEFORE COMMENCING FITMENT

-BEFORE INSTALLATION THE BROWN DAVIS LONG RANGE TANK SHOULD BE WASHED OUT WITH THE SAME FUEL TYPE AS THE VEHICLE IT'S BEING FITTED TO

Any questions or information required in relation to the below instructions please do not hesitate to contact Brown Davis head office or one of our distributors.

Phone: +61 (3) 9762 8722

Email: info@browndavis.com.au

Brown Davis Automotive Pty. Ltd.

47 Holloway Drive, Bayswater, Victoria, Australia 3153

Ph: +61 (3) 9762 8722 | Fax: +61 (3) 9762 9829 | Email: info@browndavis.com.au | Web: www.browndavis.com.au

Brown Davis Automotive Pty. Ltd.
ABN: 72 657 573 544

Copyright Brown Davis Automotive Pty. Ltd. This document contains technical information the property of Brown Davis Automotive Pty. Ltd.

REMOVAL OF STANDARD TANK

1. Remove LH rear wheel arch cover to expose filler hose and fast fill breather hose. Undo the hose clamps and remove the hoses.



2. Lift car on hoist or jack stands to remove the fuel tank. Unclip fuel lines from front of tank making sure lines don't syphon fuel onto the ground.



3. Undo front and rear mounting straps from under the tank, keeping bolts to be used on the new tank. Lower tank down carefully to gain access to fuel pump/sender unit wiring, unclip plug from gauge, then lower the tank to the ground.



Brown Davis Automotive Pty. Ltd.

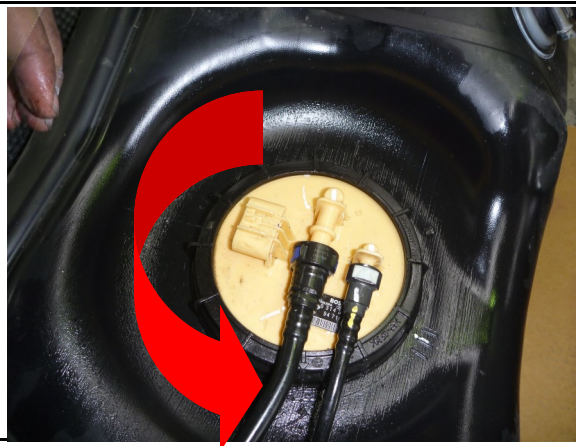
ABN: 72 657 573 544

Copyright Brown Davis Automotive Pty. Ltd. This document contains technical information the property of Brown Davis Automotive Pty. Ltd.

4. Unclip fuel lines from the sender unit to go on the new tank.



5. Remove fuel sender unit. This requires a special tool. In the absence of the special tool, the sender outer ring can be undone using a hammer and a blunt piece of metal. Tap lightly on alternating sides of the ring changing ribs regularly to avoid breaking ribs



Brown Davis Automotive Pty. Ltd.

47 Holloway Drive, Bayswater, Victoria, Australia 3153

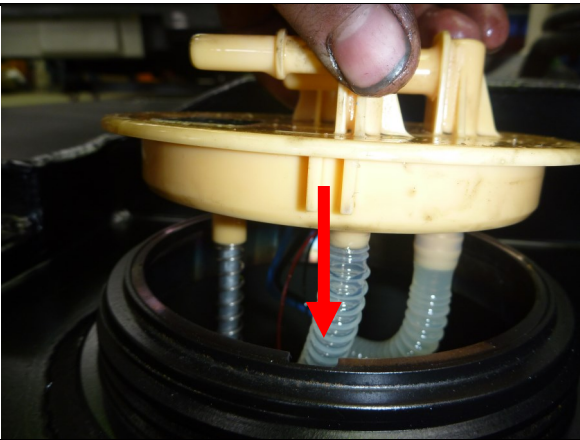
Ph: +61 (3) 9762 8722 | Fax: +61 (3) 9762 9829 | Email. info@browndavis.com.au | Web. www.browndavis.com.au

Brown Davis Automotive Pty. Ltd.
ABN: 72 657 573 544

Copyright Brown Davis Automotive Pty. Ltd. This document contains technical information the property of Brown Davis Automotive Pty. Ltd.

SETUP OF NEW REPLACEMENT FUEL TANK

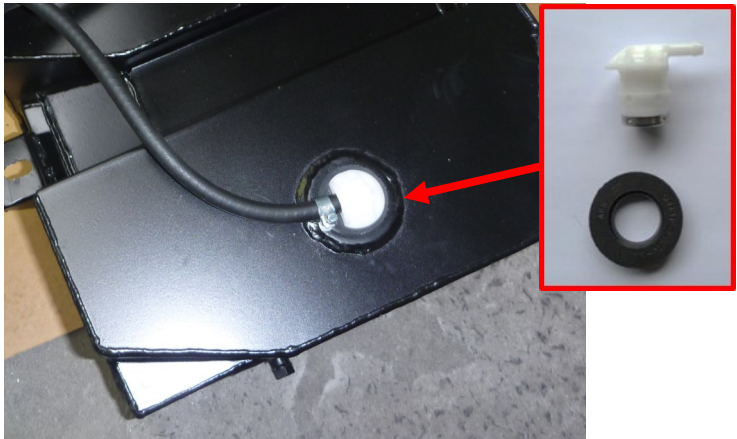
6. Fit fuel pump sender unit to the new tank, aligning key way with the sender unit key and tighten retaining ring.



7. Fit the fuel lines to the new tank. Fit the cushion clamps to hold lines in place and then tighten using M6 nuts and washers supplied.



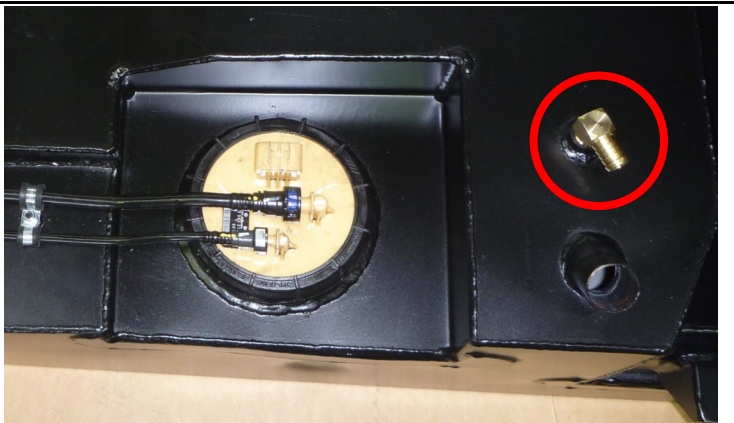
8. Fit discriminator valve and gasket to the raised rear section of tank.
 - Fit 6mm hose and clamp to 6mm barb to run up to the filler when tank it is in position.



Brown Davis Automotive Pty. Ltd.
ABN: 72 657 573 544

Copyright Brown Davis Automotive Pty. Ltd. This document contains technical information the property of Brown Davis Automotive Pty. Ltd.

9. Fit 5/8 x 3/8 BSP elbow to new tank using thread sealant. Point brass fitting to passenger side of tank.



10. Fit filler and fast fill hoses to the new tank. Take note of the position of the hoses before removing them from the standard tank. Fit hoses to the new tank in the same position as they were removed from the standard tank.



INSTALLING OF REPLACEMENT TANK

11. Fit 2 new brackets supplied, to chassis on the tail shaft side of the tank in the same position as where the original straps were removed from.



12. Using a lifting device, lift the tank into position.
- * As the tank goes up into position.
 - ⇒ Plug in the gauge sender wire.
 - ⇒ Feed filler hoses and fast filler hoses up in to the wheel arch.





13. Reuse the strap retaining bolts on the brackets on passenger side of the tank.
- Fit bolts on bracket fitted earlier through RH side brackets and fit M10 nuts and washers.



Brown Davis Automotive Pty. Ltd.
ABN: 72 657 573 544

Copyright Brown Davis Automotive Pty. Ltd. This document contains technical information the property of Brown Davis Automotive Pty. Ltd.

14. Now tighten all the bolts to secure the tank. Double nut RH side mounts to making sure the brackets can't twist in the mounts.	
15. Refit the rubber filler hose and fast fill breather hose to the steel filler assembly on the car. Position the 6mm hose from discriminator valve up to the filler and cable tie the hose up high and fit small filter to end with arrow pointing toward tank.	
16. Re connect fuel lines at front of tank.	
17. Refit inner wheel arch cover.	
18. Double check all bolts and fuel line clamps are tight. Check security of fuel lines. Fill tank and check for leaks. Road test and check for rattlers & squeaks. Re-check for fuel leaks.	