



LONG RANGE FUEL TANKS
VWAR1

Brown Davis Automotive Pty. Ltd.
ABN: 72 657 573 544
Copyright Brown Davis Automotive Pty. Ltd. This document contains technical information the property of Brown Davis Automotive Pty. Ltd.

VOLKSWAGEN AMAROK 2011- PRESENT – 135lt REPLACEMENT TANK
LONG RANGE FUEL TANK PARTS LIST AND FITTING INSTRUCTIONS
PART NUMBER: VWAR1

Item #	Description	Quantity	Part No.	P	C
1	TANK—REPLACEMENT	1	VWAR1	-	-
2	DRAIN PLUG—MAGNETIC—M14 (FITTED TO THE TANK)	1	DP-M14	-	-
3	HOSE – TMP - 6mm (breather tube)	0.9m			
4	HOSE – FUEL AND EMISSIONS - 8mm	700mm			
5	HOSE – FUEL AND EMISSIONS - 8mm	570mm			
6	HOSE – TMP – 16mm	485mm			
7	HOSE – TMP – 16mm	230mm			
8	HOSE CLAMP – STAINLESS - 8-16mm	4			
9	HOSE CLAMP – STAINLESS – 12-22mm	4			
10	HOSE CLAMP – STAINLESS – 32-50mm	1			
11	HOSE CLAMP – NORMA – 6-16mm	1			
12	BRASS – ELBOW – 5/8" x 3/8" BSP	1			
13	BRASS – T PIECE – 5/8" x 3/8" BSP	1			
14	DISCRIMINATOR VALVE	1			
15	DISCRIMINATOR VALVE SEAL	1			
16	WASHER – PANEL WASHER - M10	6			
17	NUT – NYLOC - ZINC PLATED – M10	1			
18	SET SCREW – HEX – M10 X 100mm – PLATED 8.8	1			
19	WARRANTY INFORMATION SHEET	1			
20	BROWN DAVIS AUTOMOTIVE STICKER	1			

	STAFF MEMBERS INITIALS		DATE
KIT PACKED BY			
KIT CHECKED BY			

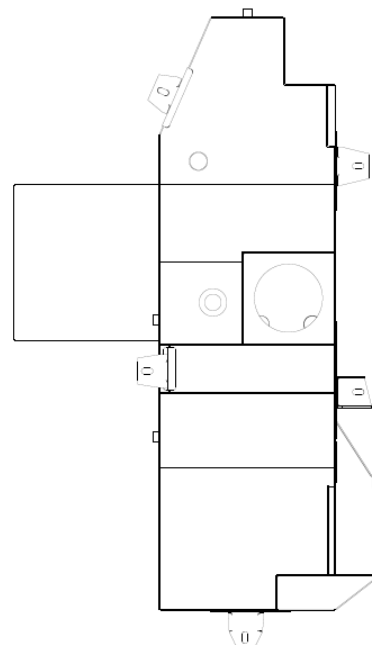
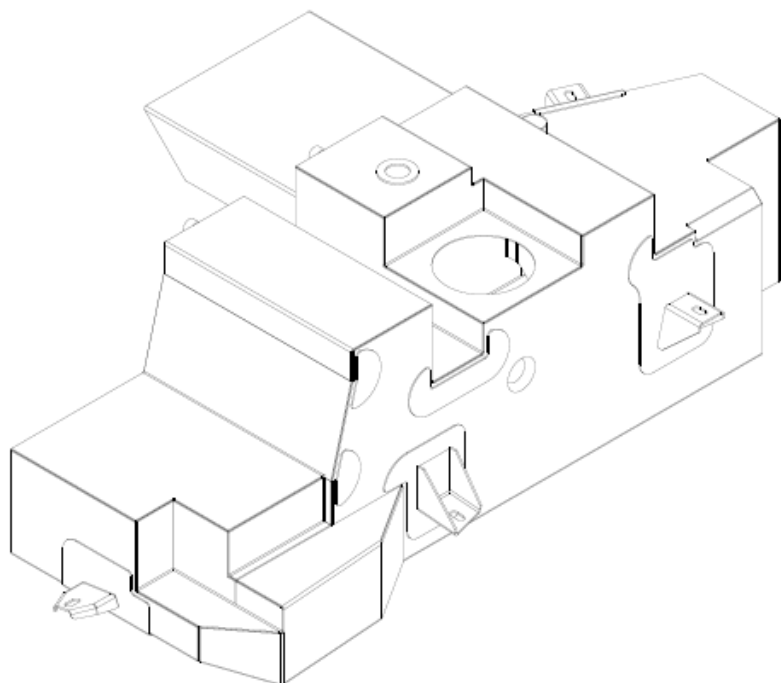
DATE LAST EDITED: 20/03/2014

Brown Davis Automotive Pty. Ltd.

ABN: 72 657 573 544

Copyright Brown Davis Automotive Pty. Ltd. This document contains technical information the property of Brown Davis Automotive Pty. Ltd.

**VWAR1 – 135lt REPLACEMENT TANK
LONG RANGE FUEL TANK PARTS LIST AND FITTING INSTRUCTIONS
PART NUMBER: VWAR1**



WARNING:

THIS FUEL TANK IS HEAVY. DO NOT ATTEMPT TO LIFT THIS FUEL TANK WITHOUT APPROPRIATE ASSISTANCE OR SERIOUS INJURY MAY RESULT



WARNING:

ENSURE A FIRE EXTINGUISHER IS AVAILABLE WHILST WORKING NEAR EXPOSED FUEL



-CHECK CONTENTS OF KIT BEFORE COMMENCING FITMENT

-DRAIN VEHICLE FUEL TANK TO LOWEST LEVEL POSSIBLE BEFORE COMMENCING FITMENT

-BEFORE INSTALLATION THE BROWN DAVIS LONG RANGE TANK SHOULD BE WASHED OUT WITH THE SAME FUEL TYPE AS THE VEHICLE IT'S BEING FITTED TO

Any questions or information required in relation to the below instructions please do not hesitate to contact Brown Davis head office or one of our distributors.

Phone: +61 (3) 9762 8722

Email: info@browndavis.com.au

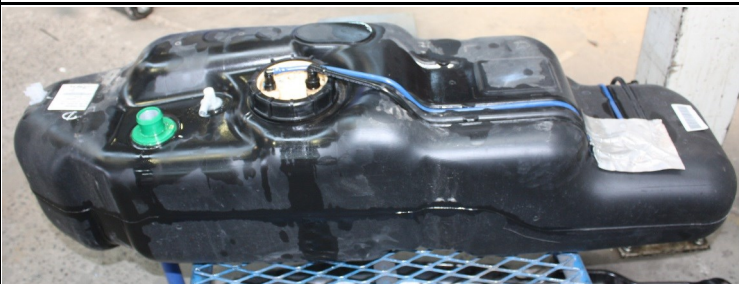
Brown Davis Automotive Pty. Ltd.

47 Holloway Drive, Bayswater, Victoria, Australia 3153

Ph: +61 (3) 9762 8722 | Fax: +61 (3) 9762 9829 | Email: info@browndavis.com.au | Web: www.browndavis.com.au

Brown Davis Automotive Pty. Ltd.
ABN: 72 657 573 544

Copyright Brown Davis Automotive Pty. Ltd. This document contains technical information the property of Brown Davis Automotive Pty. Ltd.

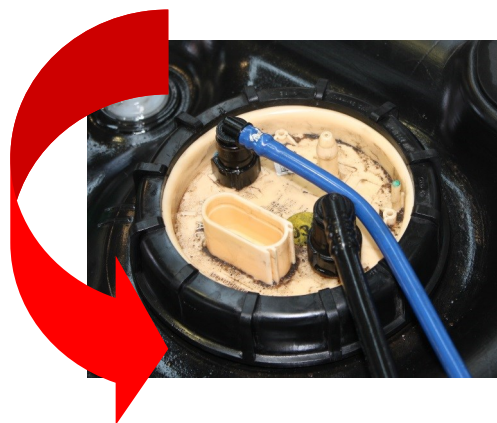
REMOVAL OF STANDARD TANK	
<p>1. Mark tail shaft to rear differential flange to ensure re-fitting to original orientation. Remove drive shaft at diff end and tie drive shaft out of the way, to the side, under exhaust.</p>	
<p>2. Disconnect fast fill and filler hoses from the rear of the standard tank.</p> <ul style="list-style-type: none"> Remove the fuel tank guard. 	
<p>3. Disconnect fuel lines (pick-up and return) from the passenger side of the tank.</p> <ul style="list-style-type: none"> Disconnect the wiring loom from the top of the sender. 	
<p>4. With a lifting device in place, undo all bolts holding tank.</p> <ul style="list-style-type: none"> Lower tank carefully and place on bench or ground. Do not tip tank to any fuel spill. 	

SET-UP OF NEW REPLACEMENT TANK

5. Remove the fuel lines from the sender unit and discard them.



6. Remove fuel sender unit. This requires a special tool. In the absence of the special tool, the sender outer ring can be undone using a hammer and a blunt piece of metal. Tap lightly on alternating sides of the ring changing ribs regularly to avoid breaking ribs.



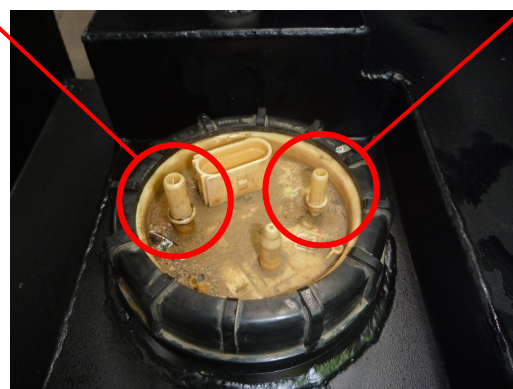
7. Fit gauge into Brown Davis tank with original gauge ring and seal. Fit 8mm fuel hoses supplied in kit.

NOTE: two different lengths. One is supply and one is return. Ensure correct lengths are used in the correct position.

- Look down the discriminator valve hole. Check and make sure the sender unit is fitted correctly. (NOTE: Fuel sender unit may not necessarily go into the same position as the original tank. The float should be parallel with the fuel box.)
- FITTING TIP: Soak screw ring in boiling water for a couple of minutes and then screw it on the tank straight away

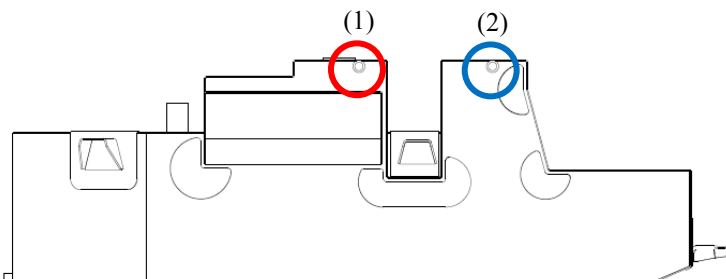
Supply

Return



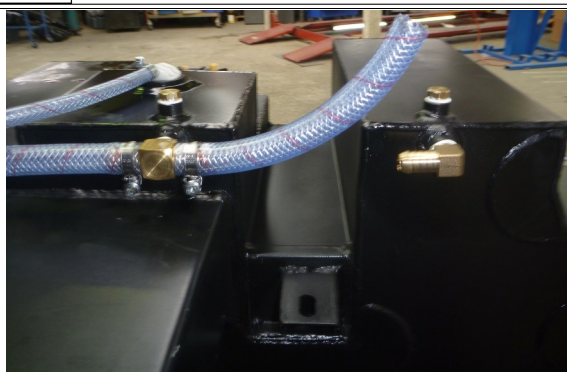
8. Fit discriminator valve seal, discriminator valve and 6mm TMP hose with supplied clamp

9. Fit the 3/8" x 5/8" BSP T piece into socket (1) and the 3/8" x 5/8 elbow into socket (2).

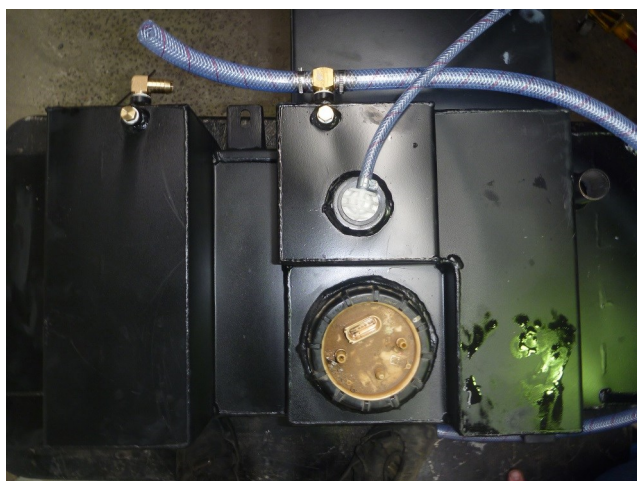


10. Cut and fit 16mm TMP hose in between the T-piece and elbow leaving the leftover for the fast fill.

NOTE: Do not attach the hose to elbow until the tank is in place. Then fit hose over cross member on to 5/8 elbow and do up the clamp.



11. Cut standard white fast fill hose off as per photo and attach the 16mm TMP hose with clamp to car



INSTALLING OF REPLACEMENT TANK

12. Use lifting device to lift tank in place slowly. While lifting the tank up, place the 6mm TMP hose into the body cavity above the discriminator valve and cut to size if necessary.
- Place all fuel lines over the centre cross-member when lifting the tank into position.



13. Keep lifting making sure to plug in the sender wire and that no fuel lines or breather hoses get crushed.

14. Plug the 2 fuel lines back on the car at the left hand side, attach filler hose and the fast fill breather hose, using the standard clamps, to the tank.

NOTE: Route the fuel lines as best you can making sure they don't kink.




15. Fit SET SCREW - HEX - M10 x 100mm, through the original hole in the front cross member. You may have to drill through the top of the cross member for the bolt to go through.



Brown Davis Automotive Pty. Ltd.
ABN: 72 657 573 544

Copyright Brown Davis Automotive Pty. Ltd. This document contains technical information the property of Brown Davis Automotive Pty. Ltd.

<p>16. Fit the standard tank bolts to the left and right brackets on tank, and tighten.</p>	
<p>17. Double check all fuel line clamps and security of fuel lines. Fill tank and check for leaks. Road test and check for rattlers & squeaks. Re-check for fuel leaks.</p>	