



LONG RANGE FUEL TANKS
JWRA1

Brown Davis Automotive Pty. Ltd.
ABN: 72 657 573 544
Copyright Brown Davis Automotive Pty. Ltd. This document contains technical information the property of Brown Davis Automotive Pty. Ltd.

JEEP WRANGLER –JK 2007-PRESENT - 2 DOOR - 10/06 ONWARDS | DIESEL – 55lt AUXILIARY TANK
AUXILIARY FUEL TANK PARTS LIST AND FITTING INSTRUCTIONS
PART NUMBER: JWRA1

Item #	Description	Quantity	Part No.	P	C
1	TANK—REPLACEMENT	1	JWRA1	-	-
2	DRAIN PLUG—MAGNETIC—M14 (FITTED TO THE TANK)	1		-	-
3	HOSE – FUEL AND EMISSION - 8mm	1.6m			
4	HOSE – FILLER – 34mm	190mm			
5	HOSE – FILLER – 34mm	130mm			
6	HOSE CLAMP – STAINLESS – 8-16mm	6			
7	HOSE CLAMP – STAINLESS – 25-40mm	4			
8	FUEL PICK UP – 5/16" x 1/4" BSP ELBOW	1			
9	BRASS FITTING - ELBOW - 5/16" x 1/4" BSP	1			
10	BRASS FITTING - ELBOW - 5/16" x 1/8" BSP	2			
11	CABLE TIE - 8" BLACK	5			
12	FUEL GUAGE/SWITCH – CP 309GS LED DASH UNIT	1			
13	RELAY/BUZZER – PEEL – CP 5	1			
14	WIRE – TWIN CORE – 3.0mm – BROWN/WHITE—WITH PLUG	5m			
15	CRIMP FITTING – SPADE FEMALE 6mm - INSULATED - RED	1			
16	CRIMP FITTING – SPADE FEMALE 4mm - RED	1			
17	CRIMP FITTING - RING 5MM - RED	1			
18	CRIMP FITTING – JOINER 3mm - RED	1			
19	SCOTCH LOCK	1			
20	SENDER UNIT - VDO 220-004— <i>FITTED TO TANK</i>	1			
21	FUEL PUMP – POSI-FLO	1			
22	FUEL FILTER – INLINE – 8mm	1			
23	SCREW - SELF TAPPER	2			
24	SET SCREW – PAN HEAD – M4 x 10mm – PLATED 8.8	5			
25	WASHER – SPRING PLATED – M4	5			
26	BOLT – HEX – M10 x 45mm – PLATED 8.8	2			
27	BOLT – HEX – M10 x 65mm – PLATED 8.8	1			
28	BOLT – HEX – M10 x 75mm – PLATED 8.8	1			
29	WASHER – PANEL PLATED – M10	8			
30	WARRANTY CARD & INFORMATION	1			
31	BROWN DAVIS AUTOMOTIVE STICKER	1			

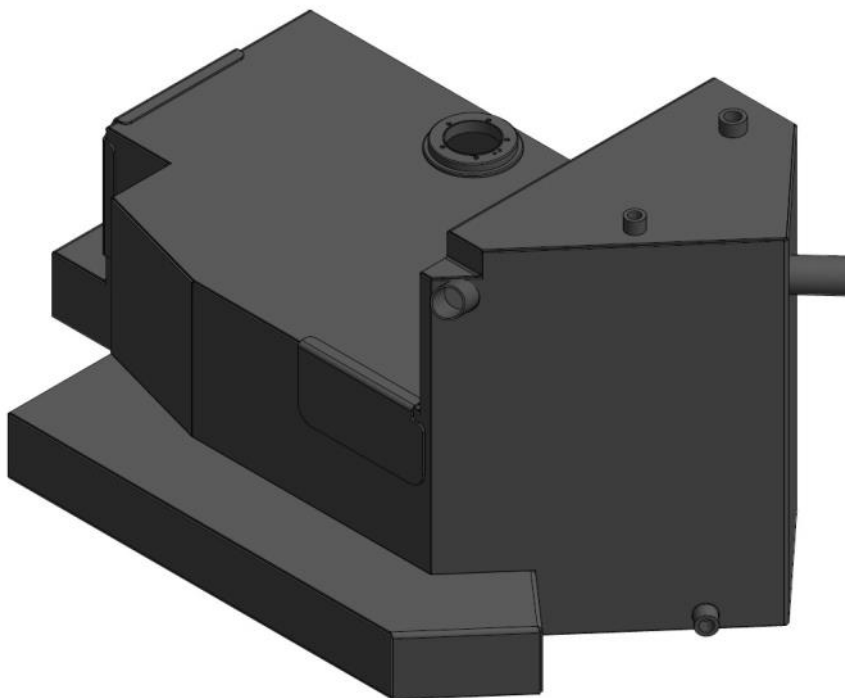
	STAFF MEMBERS INITIALS	DATE
KIT PACKED BY		
KIT CHECKED BY		

Brown Davis Automotive Pty. Ltd.

ABN: 72 657 573 544

Copyright Brown Davis Automotive Pty. Ltd. This document contains technical information the property of Brown Davis Automotive Pty. Ltd.

PART NUMBER: JWRA1 AUXILIARY FUEL TANK PARTS LIST AND FITTING INSTRUCTIONS



WARNING:

THIS FUEL TANK IS HEAVY. DO NOT ATTEMPT TO LIFT THIS FUEL TANK WITHOUT APPROPRIATE ASSISTANCE OR SERIOUS INJURY MAY RESULT



WARNING:

ENSURE A FIRE EXTINGUISHER IS AVAILABLE WHILST WORKING NEAR EXPOSED FUEL



- **CHECK CONTENTS OF KIT BEFORE COMMENCING FITMENT**
- **DRAIN VEHICLE FUEL TANK TO LOWEST LEVEL POSSIBLE BEFORE COMMENCING FITMENT**
- **BEFORE INSTALLATION THE BROWN DAVIS LONG RANGE TANK SHOULD BE WASHED OUT WITH THE SAME FUEL TYPE AS THE VEHICLE IT'S BEING FITTED TO**

Any questions or information required in relation to the below instructions please do not hesitate to contact Brown Davis head office or one of our distributors.

Phone: +61 (3) 9762 8722

Email: info@browndavis.com.au

Brown Davis Automotive Pty. Ltd.

47 Holloway Drive, Bayswater, Victoria, Australia 3153

Ph: +61 (3) 9762 8722 | Fax: +61 (3) 9762 9829 | Email: info@browndavis.com.au | Web: www.browndavis.com.au