



LONG RANGE FUEL TANKS
POL100R1

Brown Davis Automotive Pty. Ltd.
ABN: 72 657 573 544
Copyright Brown Davis Automotive Pty. Ltd. This document contains technical information the property of Brown Davis Automotive Pty. Ltd.

POLARIS RAZOR 1000 – 83lt AUXILIARY TANK
REPLACEMENT FUEL TANK PARTS LIST AND FITTING INSTRUCTIONS
PART NUMBER: POL100R1

Item #	Description	Quantity	Part No.	P	C
1	TANK—REPLACEMENT	1	POL100R1	-	-
2	HOSE – FUEL AND EMISSION - 8mm	2.2m		-	-
3	HOSE – FUEL AND EMISSION - 12.5mm	1.3m			
4	HOSE – FILLER – 51mm	60mm			
5	HOSE – FILLER – 51mm	100mm			
6	HOSE CLAMP – STAINLESS – 12-22mm	4			
7	HOSE CLAMP – STAINLESS – 40-60mm	4			
8	BRASS FITTING - ELBOW - 1/2" x 1/4 BSP	2			
9	SET SCREW – PAN HEAD – M6 x 20mm – PLATED 8.8	2			
10	WASHER – FLAT PLATED – M6	2			
11	NUT– NYLOCK – M6	2			
12	SET SCREW – HEX – M8 x 40mm – PLATED 8.8	2			
13	WASHER – FLAT PLATED – M8	4			
14	NUT– NYLOCK – M8	2			
15	SET SCREW – HEX – M10 x 25mm – PLATED 8.8	2			
16	WASHER – FLAT PLATED – M10	2			
17	WASHER – SPRING PLATED – M10	2			
18	CUSHION CLAMP - 40mm	2			
19	DISCRIMINATOR VALVE	1			
20	DISCRIMINATOR VALVE SEAL	1			
21	BACKUP PLATE - 50x40mm - OFFSET HOLE	2	BP-NC-1040050		
22	ADHESIVE RUBBER - 10mm - 200x50mm	4			
23	STRAP RUBBER - 51mm	800mm (x2)			
24	TANK STRAPS	2	TS-POL1000R1		
25	STARTING COIL BRACKET	1			
26	IGNITION MODUAL BRACKET	1			
27	FILLER CAP NECK - POLARIS	1	5436898		
28	FILLER TUBE ASSEMBLY	1	FT-POL100R1		

KIT CONTINUES ON NEXT PAGE



LONG RANGE FUEL TANKS
POL100R1

Brown Davis Automotive Pty. Ltd.
ABN: 72 657 573 544
Copyright Brown Davis Automotive Pty. Ltd. This document contains technical information the property of Brown Davis Automotive Pty. Ltd.

BATTERY TRAY

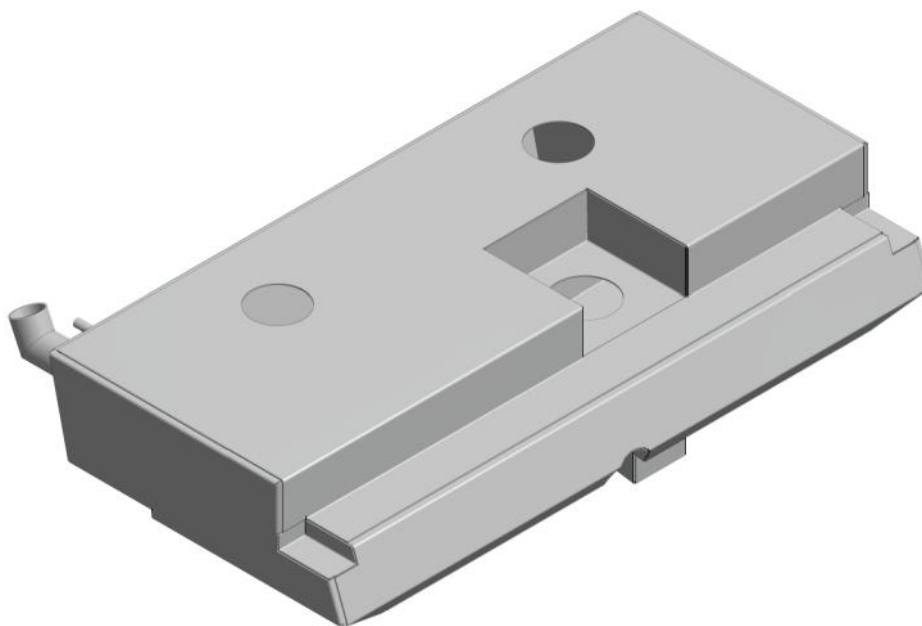
Item #	Description	Quantity	Part No.	P	C
29	BATTERY TRAY	1	POLRZR1000-2-BT		
30	SET SCREW – HEX – M6 x 20mm – PLATED 8.8	10			
31	WASHER – FLAT PLATED – M6	10			
32	WASHER – SHAKEPROOF PLATED – M6	10			
33	NUT – NYLOCK PLATED – M6	9			
34	BACK UP PLATE - 100x30mm - 60mm HOLE SPACING	1			
35	BATTERY STRAP - ALLOY	1			
36	STRAP RUBBER - 30mm	300mm			
37	KIT LIST & INFORMATION SHEET	1			
38	BROWN DAVIS ROPS STICKER	2			

	STAFF MEMBERS INITIALS	DATE
KIT PACKED BY		
KIT CHECKED BY		

Brown Davis Automotive Pty. Ltd.
ABN: 72 657 573 544

Copyright Brown Davis Automotive Pty. Ltd. This document contains technical information the property of Brown Davis Automotive Pty. Ltd.

PART NUMBER: POL100R1 REPLACEMENT FUEL TANK PARTS LIST AND FITTING INSTRUCTIONS



WARNING:

THIS FUEL TANK IS HEAVY. DO NOT ATTEMPT TO LIFT THIS FUEL TANK WITHOUT APPROPRIATE ASSISTANCE OR SERIOUS INJURY MAY RESULT



WARNING:

ENSURE A FIRE EXTINGUISHER IS AVAILABLE WHILST WORKING NEAR EXPOSED FUEL



-CHECK CONTENTS OF KIT BEFORE COMMENCING FITMENT

-DRAIN VEHICLE FUEL TANK TO LOWEST LEVEL POSSIBLE BEFORE COMMENCING FITMENT

-BEFORE INSTALLATION THE BROWN DAVIS LONG RANGE TANK SHOULD BE WASHED OUT WITH THE SAME FUEL TYPE AS THE VEHICLE IT'S BEING FITTED TO

Any questions or information required in relation to the below instructions please do not hesitate to contact Brown Davis head office or one of our distributors.

**Phone: +61 (3) 9762 8722
Email: info@browndavis.com.au**

Brown Davis Automotive Pty. Ltd.

ABN: 72 657 573 544

Copyright Brown Davis Automotive Pty. Ltd. This document contains technical information the property of Brown Davis Automotive Pty. Ltd.

SETUP FOR LONG RANGE TANK

1. Remove the seats.



2. Remove the doors.



Brown Davis Automotive Pty. Ltd.

ABN: 72 657 573 544

Copyright Brown Davis Automotive Pty. Ltd. This document contains technical information the property of Brown Davis Automotive Pty. Ltd.

3. Remove the belts.



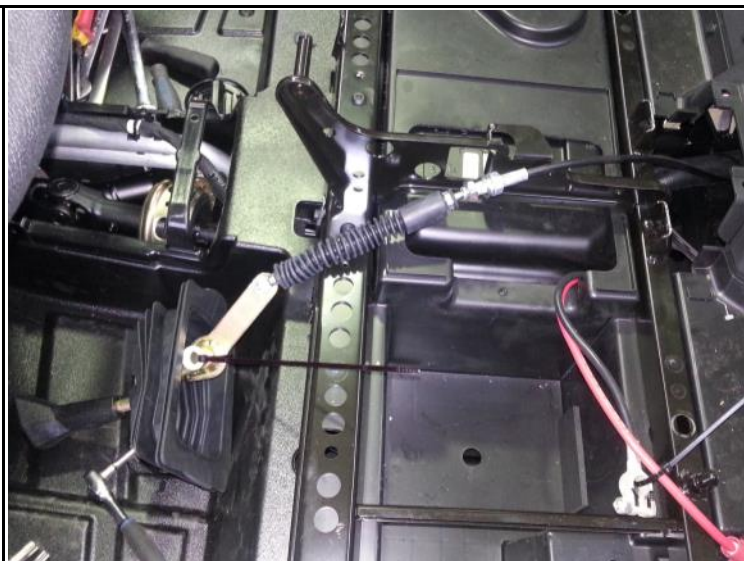
4. Remove the center console.



5. Remove the battery and the fuse box.



6. Disconnect the gear shifter mechanism.



7. Remove the seat frame.



8. Remove the ignition module.

9. Remove the plastic floor.



Brown Davis Automotive Pty. Ltd.
ABN: 72 657 573 544

Copyright Brown Davis Automotive Pty. Ltd. This document contains technical information the property of Brown Davis Automotive Pty. Ltd.

10. Disconnect all fuel lines then remove the standard fuel tank.

- The black plastic side panel (passenger side) will need to be loosened and pulled out a little to allow clearance for the filler to slide out.



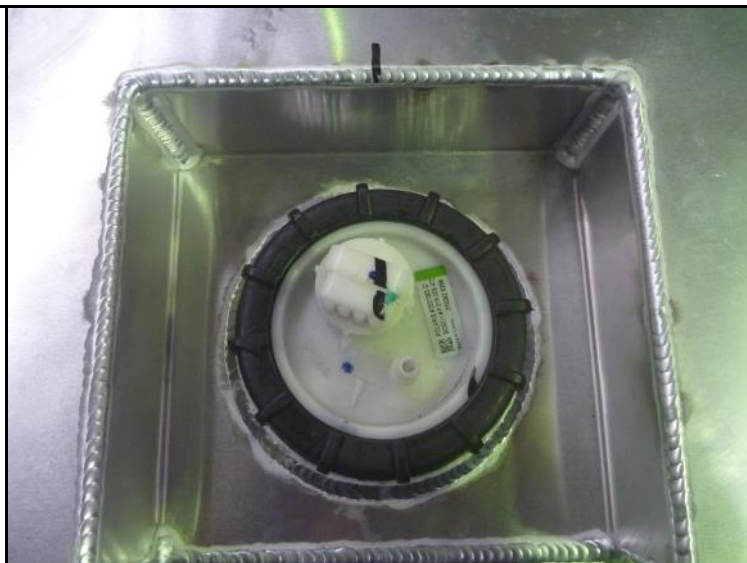
11. Stick the four ADHESIVE RUBBER - 10mm - 200x50mm to the chassis rail on both left and right hand sides, **as shown in photo.*



SETUP OF LONG RANGE TANK

12. Remove the gauge ring from the standard tank and fit it into the new Brown Davis fuel tank.

- Make sure orientation of float arm is correct. Arm should pivot into the sump cutout.



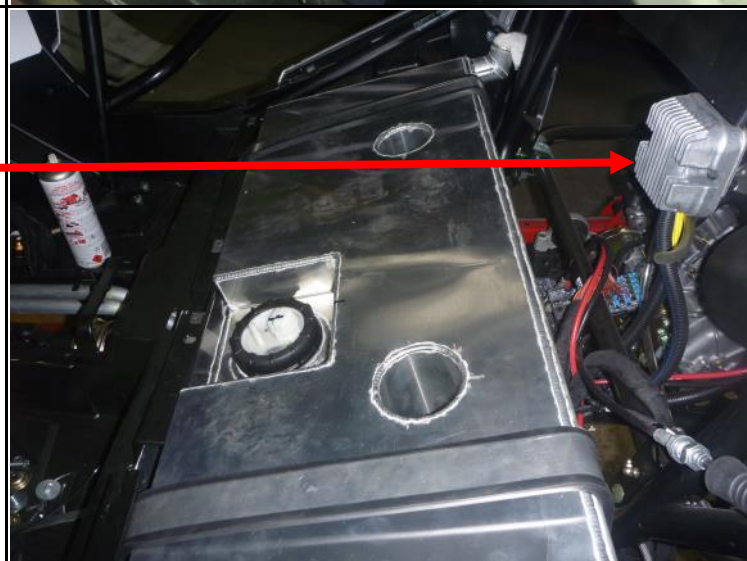
13. Place the new Brown Davis tank into place.

- ⇒ **NOTE:** The front of the tank should go in first so the step on the front is sitting under the plastic floor.
- ⇒ The edge of the cylinder cutouts may touch the seat mount brackets as the tank is going in. The easiest way to avoid this is to lift the front of the tank from underneath, leveling the tank out, then lowering the rear.



14. Put the straps over the tank.

- Refit the ignition module on the folded bracket supplied up to the frame behind the drivers seat *as shown in photo.*



Brown Davis Automotive Pty. Ltd.
ABN: 72 657 573 544

Copyright Brown Davis Automotive Pty. Ltd. This document contains technical information the property of Brown Davis Automotive Pty. Ltd.

15. Position cushion clamps around the bar at the front of the tank, then using an M6 bolt, nylock nut and washer, fasten the strap to the front face of the straps.



16. The rear of the strap should hover above a plate on the chassis.
- Drill a hole that lines up with the hole in the strap.
 - Sit the BACKUP PLATE - 50x40mm - OFFSET HOLE on the top of the top surface of the return flange on the strap (so the strap can be sandwiched between the backup plate and the chassis surface).
 - Use a M8 bolt, nylock nut and washers to fasten.



17. Using Teflon tape, thread sealant or the likes, screw in the two BRASS FITTING - ELBOW - 1/2" x 1/4 BSP into the sockets at the rear of the tank.
- Cut a length off from of the supplied HOSE – FUEL AND EMISSION - 12.5mm to connect the brass fitting, insuring the hose runs under the tailshaft.



Brown Davis Automotive Pty. Ltd.
ABN: 72 657 573 544

Copyright Brown Davis Automotive Pty. Ltd. This document contains technical information the property of Brown Davis Automotive Pty. Ltd.

18. Fit the DISCRIMINATOR VALVE, and the DISCRIMINATOR VALVE SEAL to the fabricated filler assembly supplied.
- Hold the filler assembly in place to locate an appropriate spot to install the supplied, FILLER CAP NECK - POLARIS.
- Hole saw a hole through the plastic panel and cut slots *as shown in photo*, for the filler neck to twist and lock into place.
- Using the two HOSE – FILLER – 51mm and hose clamps (100mm length on tank end, 60mm length on filler neck end), connect the filler assembly from the tank to the FILLER CAP NECK - POLARIS.



Brown Davis Automotive Pty. Ltd.
ABN: 72 657 573 544

Copyright Brown Davis Automotive Pty. Ltd. This document contains technical information the property of Brown Davis Automotive Pty. Ltd.

19. Run the remaining HOSE – FUEL AND EMISSION - 12.5mm from the fast fill pipe on the tank (next to the filler), to the pipe on the filler assembly. Use some cable ties to secure the hose to the filler pipe.



Brown Davis Automotive Pty. Ltd.
ABN: 72 657 573 544

Copyright Brown Davis Automotive Pty. Ltd. This document contains technical information the property of Brown Davis Automotive Pty. Ltd.

20. Carefully cut the two elbow off the standard fuel line.

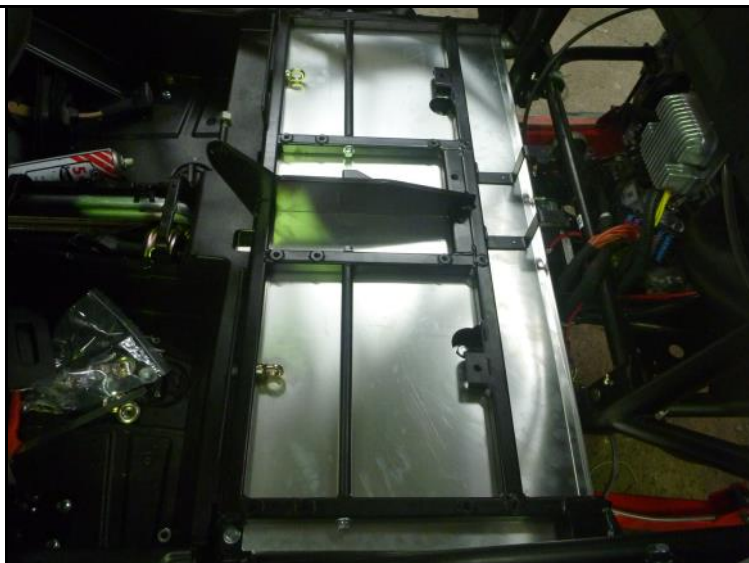
- Using a hose clamp fit the HOSE – FUEL AND EMISSION - 8mm to the elbows.
- Clip the modified fuel line to the outlet on the sender unit assembly. Safely run the line to the inlet on the engine.
- Brown Davis recommends running it forwards to the front of the tank, across the front to the left hand side, then travel it down the side of the tank to the rear. secure line with cable ties where possible.

⇒ NOTE: Avoid kinking the hose.



21. Position the supplied SEAT FRAME in place.

- Fasten the brackets that sit in the vertical tubes of the tank with the original bolts.



22. Drill a hole to fit an M10 bolt through in the side brackets of the seat frame.



23. Fit a M10 bolt with washers and nut into the brackets at the front of the frame

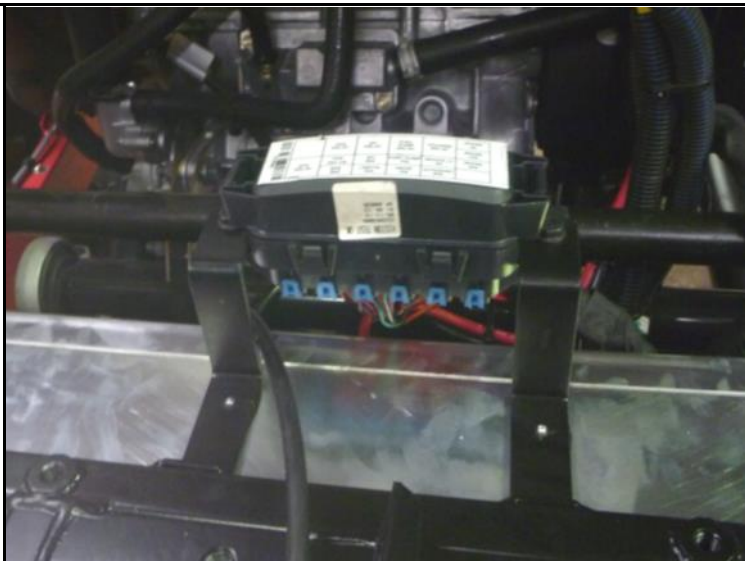


Brown Davis Automotive Pty. Ltd.

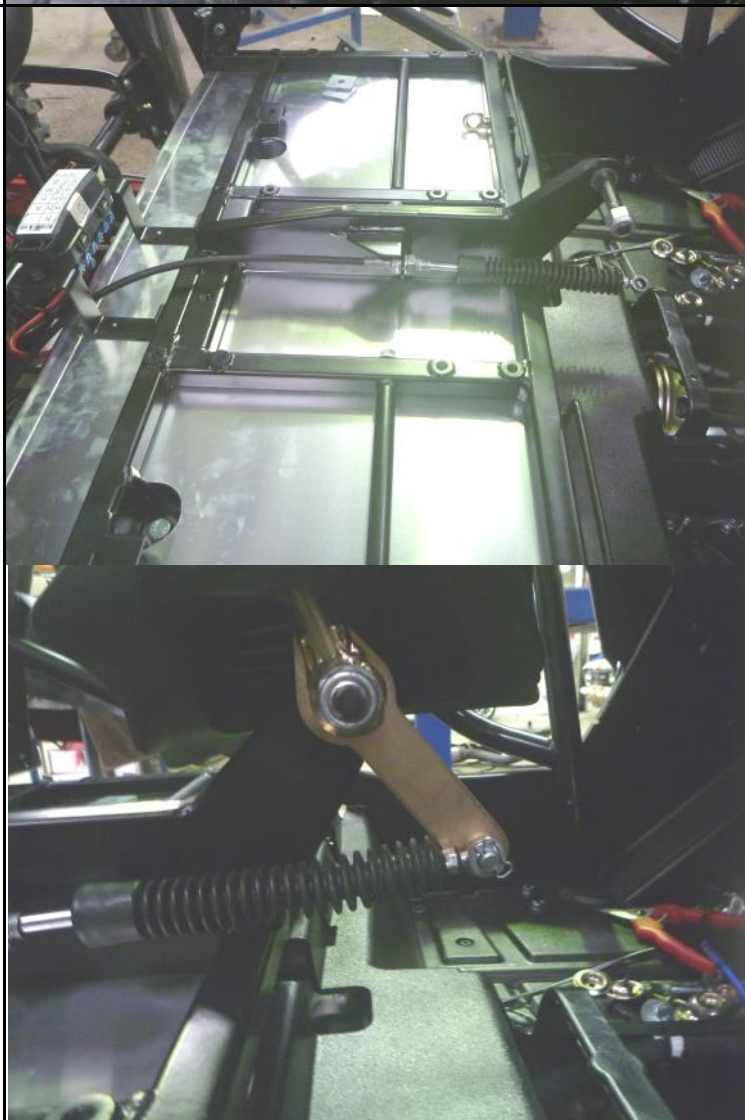
ABN: 72 657 573 544

Copyright Brown Davis Automotive Pty. Ltd. This document contains technical information the property of Brown Davis Automotive Pty. Ltd.

24. Fit the fuse box to the brackets in the rear center of the seat frame.



25. Reinstall the gear shifting mechanism



Brown Davis Automotive Pty. Ltd.

ABN: 72 657 573 544

Copyright Brown Davis Automotive Pty. Ltd. This document contains technical information the property of Brown Davis Automotive Pty. Ltd.

26. Refit the rear plastic trimming.



27. Fit the harness/seat belts.



28. The center console will need to be modified to fit over the new seat frame.

- Put cut outs the appropriate places.
- Refit console.





LONG RANGE FUEL TANKS

POL100R1

Brown Davis Automotive Pty. Ltd.
ABN: 72 657 573 544

Copyright Brown Davis Automotive Pty. Ltd. This document contains technical information the property of Brown Davis Automotive Pty. Ltd.

29. Fit seats to seat frame.