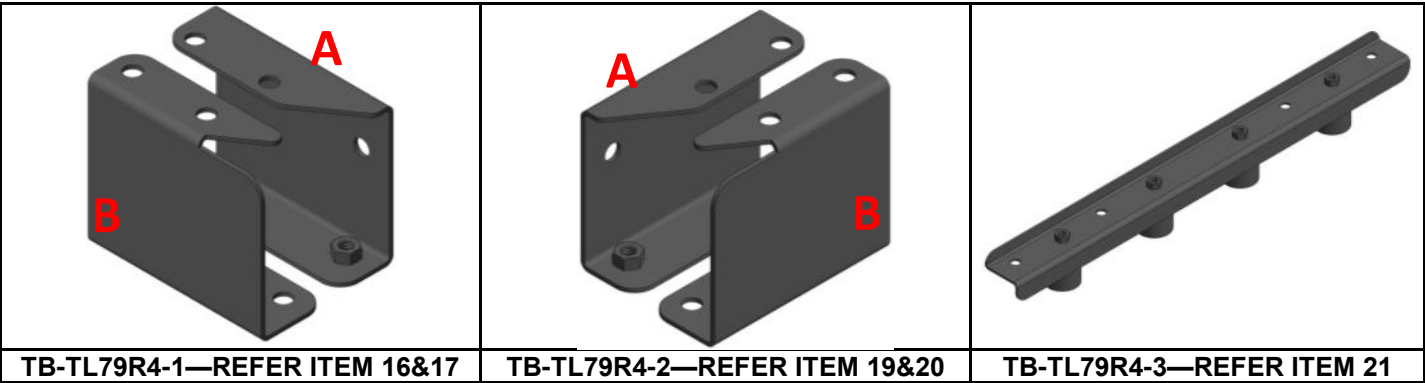


### TOYOTA LANDCRUISER 2007-PRESENT - DUAL CAB UTE – 200lt REPLACEMENT TANK

#### LONG RANGE FUEL TANK PARTS LIST AND FITTING INSTRUCTIONS

#### PART NUMBER: TL79R4

Item #	Description	Quantity	Part No.	P	C
1	TANK – REPLACEMENT	1	TL79R4	-	-
2	DRAIN PLUG- MAGNETIC – M14 (fitted to tank)	1	DP-M14	-	-
3	HOSE – FUEL EMISSION – 10mm	800mm			
4	HOSE – FUEL EMISSION – 12.5mm	800mm			
5	HOSE CLAMP – STAINLESS – 8-16mm	4			
6	HOSE CLAMP – STAINLESS – 12-22mm	4			
7	BRASS – TAIL BARB – 1/4" x 1/4" BSP	1			
8	BRASS – ELBOW – 3/8" x 1/4" BSP	1			
9	FUEL PICK UP – 1/2" x 1/4" BSP ELBOW *CUT 400mm FROM THREAD*	1			
10	CABLE TIE - 180mm	3			
11	SET SCREW – HEX – M10 x 20mm – PLATED 8.8	4			
12	SET SCREW – HEX – M10 x 30mm – PLATED 8.8	4			
13	BOLT – HEX – M10 x 75mm – PLATED 8.8	4			
14	WASHER – SPRING PLATED – M10	8			
15	WASHER – FLAT PLATED – M10	8			
16	WASHER – PANEL PLATED – M10	8			
17	MOUNTING BRACKET WITH 2x M10 CAPTIVES - LEFT	1	TB-TL79R4-1A		
18	MOUNTING BRACKET SUPPORT - LEFT	1	TB-TL79R4-2A		
19	MOUNTING BRACKET WITH 2x M10 CAPTIVES - RIGHT	1	TB-TL79R4-1B		
20	MOUNTING BRACKET SUPPORT - RIGHT	1	TB-TL79R4-2B		
21	MOUNTING BRACKET WITH 4x M10 CAPTIVES	1	TB-TL79R4-3		
22	BROWN DAVIS AUTOMOTIVE STICKER	1			
23	OPPERATIONS AND WARRANTY BOOKLET	1			



	STAFF MEMBERS INITIALS	DATE
KIT PACKED BY		
KIT CHECKED BY		

Brown Davis Automotive Pty. Ltd.  
ABN: 72 657 573 544

Copyright Brown Davis Automotive Pty. Ltd. This document contains technical information the property of Brown Davis Automotive Pty. Ltd.

**TL79R4 – 200lt REPLACEMENT TANK  
LONG RANGE FUEL TANK PARTS LIST AND FITTING INSTRUCTIONS  
PART NUMBER: TL79R4**



**WARNING:**

**THIS FUEL TANK IS HEAVY. DO NOT ATTEMPT TO LIFT THIS FUEL TANK WITHOUT APPROPRIATE ASSISTANCE OR SERIOUS INJURY MAY RESULT**



**WARNING:**

**ENSURE A FIRE EXTINGUISHER IS AVAILABLE WHILST WORKING NEAR EXPOSED FUEL**



**-CHECK CONTENTS OF KIT BEFORE COMMENCING FITMENT**

**-DRAIN VEHICLE FUEL TANK TO LOWEST LEVEL POSSIBLE BEFORE COMMENCING FITMENT**

**-BEFORE INSTALLATION THE BROWN DAVIS LONG RANGE TANK SHOULD BE WASHED OUT WITH THE SAME FUEL TYPE AS THE VEHICLE IT'S BEING FITTED TO**

**Any questions or information required in relation to the below instructions please do not hesitate to contact Brown Davis head office or one of our distributors.**

**Phone: +61 (3) 9762 8722**

**Email: [info@browndavis.com.au](mailto:info@browndavis.com.au)**

Brown Davis Automotive Pty. Ltd.  
ABN: 72 657 573 544

Copyright Brown Davis Automotive Pty. Ltd. This document contains technical information the property of Brown Davis Automotive Pty. Ltd.

1. Disconnect Filler hose, Fast Fill breather hose from the standard tank.
  - Disconnect the Pick Up hose and Return hose from the plastic fuel lines at the front right of the tank.



2. Unplug the sender unit wire from the left hand side of the chassis.
  - Remove both the male and female plugs from the plastic mount.



3. With a lifting device in place, remove the standard tank straps.



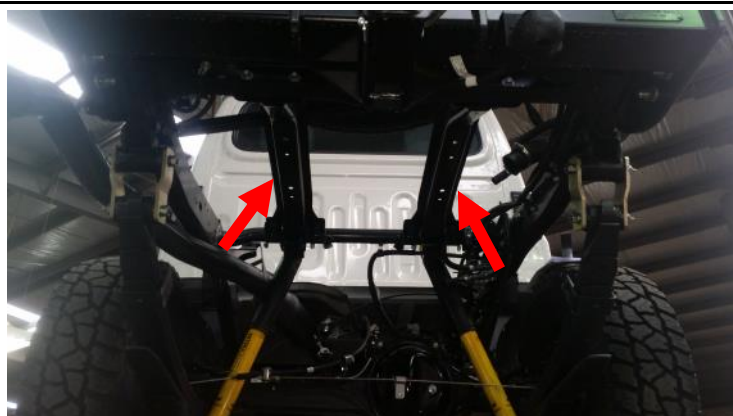
4. Carefully lower the tank out of the vehicle.





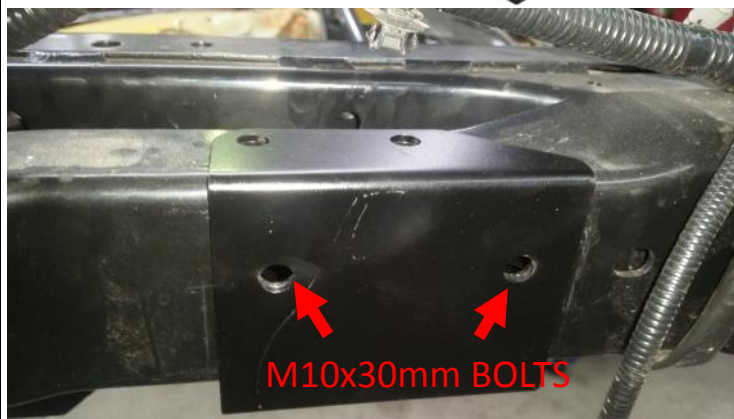
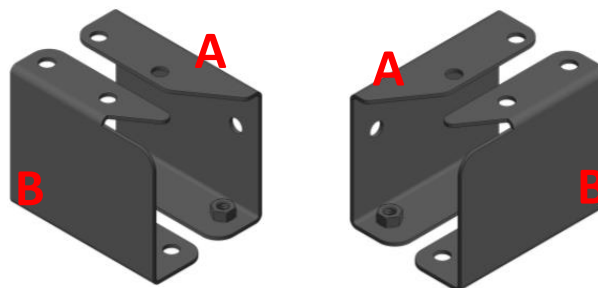
5. Remove the two tank support rails from the chassis.

- Retain the standard bolts.



6. Fit the rear mounting brackets to the chassis.

- Sit the two part A's (with the captives) on the rear of the chassis so the holes line up with the original tank support rail holes.
- Using the four M10x30mm bolts, flat washers and the nylock nuts, fasten through the front face.



Brown Davis Automotive Pty. Ltd.

ABN: 72 657 573 544

Copyright Brown Davis Automotive Pty. Ltd. This document contains technical information the property of Brown Davis Automotive Pty. Ltd.

7. Feed part B up the rear side of the chassis and sit over the part A so the top and bottom holes line up.
- Using the standard bolts in the original captives at the top of the chassis, fasten the mounting bracket.

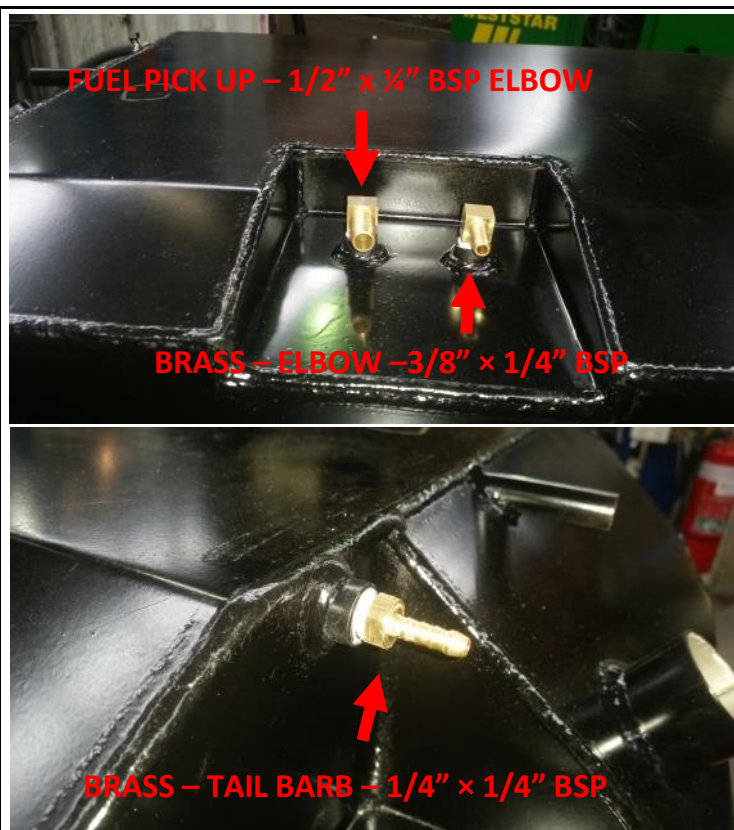


8. Fit the MOUNTING BRACKET WITH 4x M10 CAPTIVES (TB-TL79R4-3) to the four original tank support rail captives





9. Fit the brass fittings using thread sealant teflon tape or the likes on the threads.



10. Remove the check valve line off the standard tank and connect it to the BRASS - TAIL BARB - 1/4" x 1/4" BSP fitted in previous step.



11. Remove the sender unit from the standard tank and fit it to the new tank.
- Ensure that the float arm at its lowest point sits 3mm off the bottom of the tank.

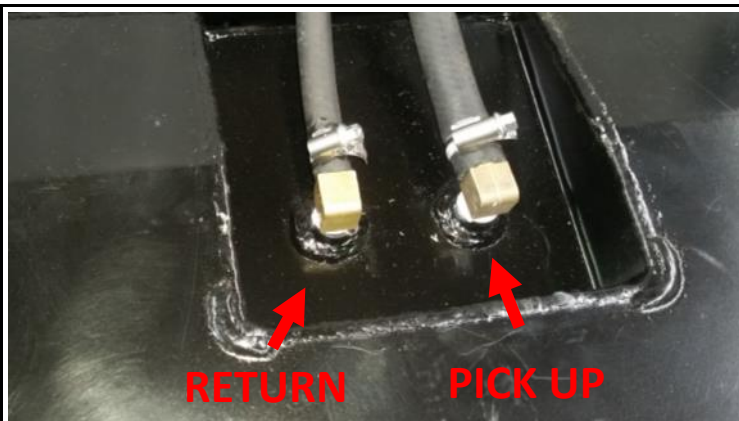


Brown Davis Automotive Pty. Ltd.  
ABN: 72 657 573 544

Copyright Brown Davis Automotive Pty. Ltd. This document contains technical information the property of Brown Davis Automotive Pty. Ltd.

12. Fit the **HOSE – FUEL EMISSION – 12.5mm** to the **FUEL PICK UP – 1/2" x 1/4" BSP ELBOW** using hose clamps.

- Fit the supplied length of **HOSE – FUEL EMISSION – 8mm** to the **BRASS – ELBOW – 3/8" x 1/4" BSP**.



13. Using a lifting device, jack the new fuel tank into place.



Brown Davis Automotive Pty. Ltd.  
ABN: 72 657 573 544

Copyright Brown Davis Automotive Pty. Ltd. This document contains technical information the property of Brown Davis Automotive Pty. Ltd.

14. Square the tank in the vehicle and line up the tank bracket holes with the mounting brackets.

- Using the M10x75mm bolts with spring and panel washers in place, fasten the front of the tank.
- Using the M10x20mm bolts with spring and panel washers in place, fasten the rear of the tank.
- Tighten all bolts firmly.



15. Fit the Filler and Fast Fill breather to the new tank using the original hose clamps.

- Tie the check valve to the filler assembly as high as possible.





16. Run the fuel lines over the chassis crossmember at the front of the tank, then down towards the plastic fuel lines.

- Fit to plastic fuel lines using supplied hose clamps.



17. Plug the sender unit back in.



18. Double check all fuel line clamps and security of fuel lines. Fill tank, road test and check for rattlers & squeaks.

